

NHERI GSC

October General Meeting



**Friday,
October 20
11:00am CST**



Agenda

- 12:00-12:15** Welcome, Announcements, Meet Executive Committee Members
- 12:15-12:50** Discussion with Chair of Research
- 12:50-12:58** Meet Executive Committee Nominations
- 12:58-1:00** Wrap up



Welcome New Members

Stephanie

Nima

Andres

Samrin

Dinuki

Shantanu

Selena

Afifah Muhsinatu

Jayasekara Heeralu

Parisa

Deepank

Marquez

Khodadadi

Rodriguez

Sauda

Siriwardana

More

Hinojos

Mardiah

Jayasekara

Toofani Movaghar

Singh

*Reach out to [Daniel Yahya](#) to learn how to get involved!



Happy Birthday, NHERI GSC!

NHERI GSC
turned two on
Wednesday,
October 18,
2023!



NHERI GSC Executive Committee



President
Emmaleah Jones



Vice President
Richard Campos



Secretary
Jordan Nakayama



Treasurer
Natalie Coleman



Vice Treasurer
Nurullah Bektas



Chair DEI
Harman Singh



Chair Research
Rakesh Salunke



Chair Workshops & Mentoring
Rajendra Gautam



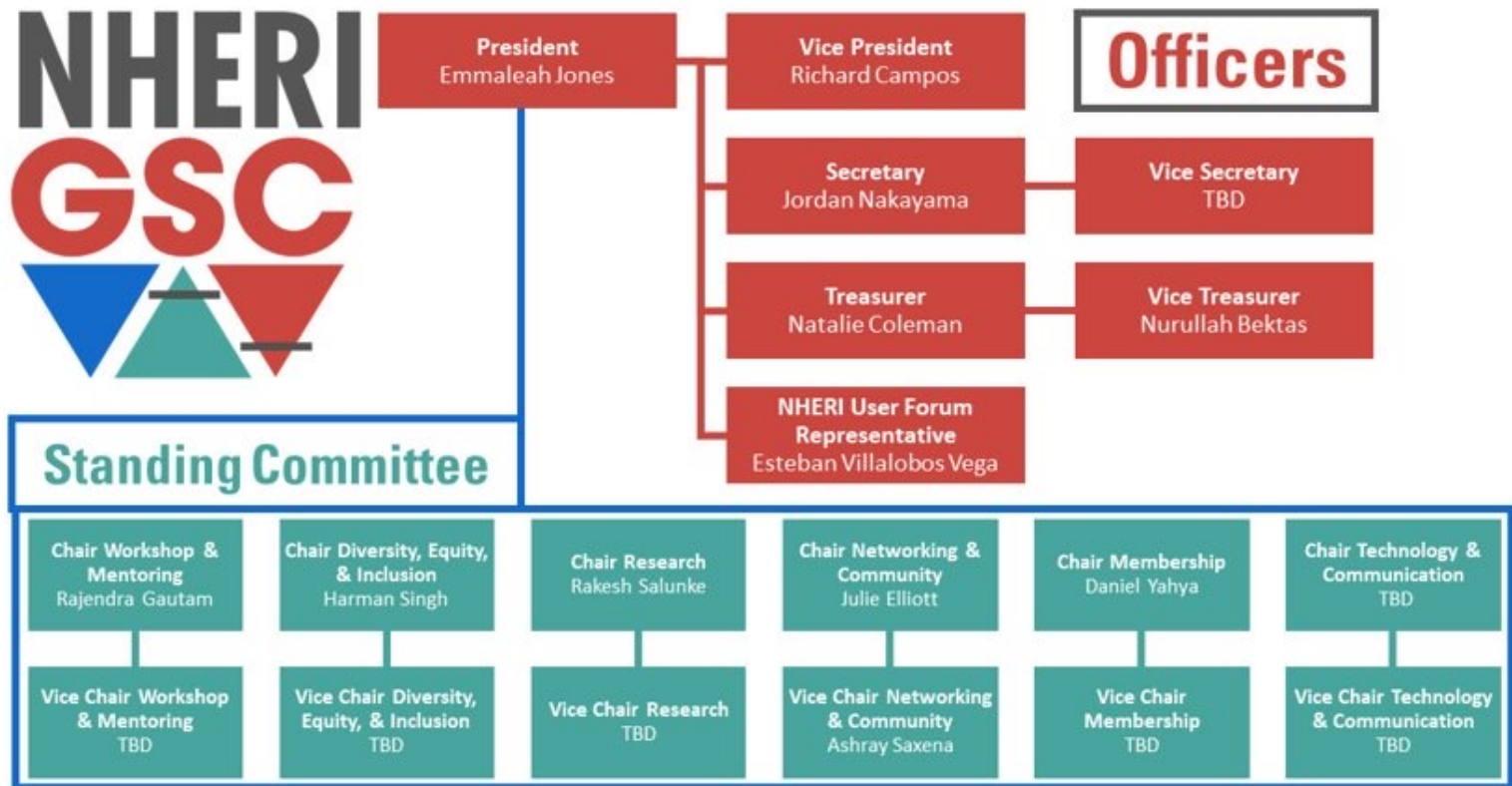
Chair Membership
Daniel Yahya



Chair Network & Community Building
Julie Elliot



NHERI GSC Executive Committee Organigram



NHERI GSC DEI Workshop

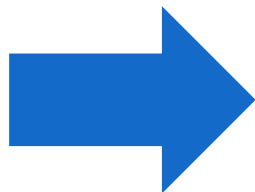
Facilitator Training

- ***Today, Friday, October 20th
12:00-1:00 pm CST***
- Learn to facilitate small groups on the topic of cultural competence
- Attend the NHERI GSC DEI Workshop

DEI Workshop

- ***Friday, October 27th, 11:00 am – 1:00 pm CST***
- Register for the free work workshop on Cultural Competence:
https://bit.ly/2023NHERI_GSCDEIWorkshop

*Register for
free*



NHERI GSC NSF Proposal

NHERI GSC is working on a proposal for NSF!

For more information or to get involved,
contact Elliot Nichols (enichols9@gatech.edu),
Treasurer Natalie Coleman
(natcoleman3@gmail.com), or Vice Treasurer
Nurullah Bektas
(nurullahbektas@hotmail.com).



October Facilitators



Rakesh Salunke
Chair of Research



Taylor Heath
NHERI GSC Member Emeritus



Road Map

1. Introductions
2. Introduce Subcommittees and RSRs
3. (Re-)Introduce Research Challenge and Mini-Conference
4. Breakout rooms for each Subcommittee
5. Discussion, Share-out, and Q&A



Research Subcommittees

Eight groups within NHERI GSC organized around major research areas in NHERI and natural hazards:

- Coastal Engineering
- Earthquake
- Geotechnical Engineering
- Reconnaissance Subcommittee
- Simulation and Computational Method
- Social Sciences
- Tsunami
- Wind Engineering

These subcommittees are designed to:

- Facilitate member communication and collaboration
- Hold meetings, events, and/or workshops around cutting-edge topics and speakers within these areas
- Foster mentorship and peer reviewing
- Work collaboratively on interdisciplinary research
- Support larger NHERI GSC initiatives
- ...and much more!



Research Subcommittee Representatives (RSRs)

What is an RSR?

- Research Subcommittee Representatives (RSR) will be face of the Subcommittee
- Excellent Opportunities for Leadership, Collaborations and Networking

What are the Positions?

- Research Subcommittees will have one (1) representative for each of the subcommittees.

What is the Role of an RSR?

- Organizing Subcommittee meetings and any desired events catering the interests and expertise of the subcommittee
- Organize NHERI GSC Interdisciplinary Research Challenge once a year, with oversight of the Chair and Vice-Chair of the Research
- Work with the Chair and Vice-Chair of Research
- RSR roles will be dynamic and rewarding, opening doors to exciting prospects and opportunities for research, networking, collaboration, and growth.



Apply for Research Subcommittee Representative (RSR)

Members in good standing may apply for eight RSR positions until **November 5, 2023:**

- Coastal Engineering
- Earthquake
- Geotechnical Engineering
- Reconnaissance Subcommittee
- Simulation and Computational Method
- Social Sciences
- Tsunami
- Wind Engineering

https://bit.ly/2023NHERIGSC_RSRApplcation



Who is eligible to apply?

RSR Eligibility Criteria

- Should not be a current elected member of the Executive Committee
- Attend 2 meetings between January 1, 2023, and the application deadline of November 5, 2023.

Upcoming meetings to become eligible

- Today's general meeting: October 20
- DEI Workshop: October 27 , 11:00 AM US Central Time
- Open Executive Meeting: November 3, 11:00 AM US Central Time.



RSR Application & Selection

- Updated Application with increased Subcommittee choices – allows applicants to choose their top three subcommittee preferences.
- All interested members are requested to apply
- RSR Selection Procedure: NHERI GSC Executive Committee will select one RSR per each subcommittee by Nov 6th



Collaborative Research Challenge

- The research challenge is designed to facilitate **new, innovative, collaborative, and interdisciplinary research** that can be presented in academic or professional settings and/or published in academic or technical journals.
- Excellent opportunity to facilitate Collaborative interdisciplinary research projects. Outcomes will be presented at the NHERI GSC Mini-Conference. Participants and organizers including RSRs will be highlighted on NHERI GSC website and annual report
- Event will be once per academic year- involves collaboration over a period of 5 to 6 months among interdisciplinary researchers and presentation of preliminary findings at the NHERI GSC mini-conference
- RSRs will help Organize and manage Research Challenge topics & groups



Sample Research Challenge

Topics

1. Use of new techniques (incl. simulation, machine learning, AI, and others) to model the behavior of civil infrastructure and risk to communities due to loading from natural hazards

2. Understanding key physical responses, vulnerabilities, and factors influencing post-event recovery of civil infrastructure and communities

3. Developing and testing mitigation strategies to achieve community resilience in contexts of multiple hazards, shifting vulnerabilities, and sustainable development

4. Innovative collecting, sharing, presenting, and visualizing data and information on hazard risks, recovery, and mitigation strategies

Collaboration

Civil & Geotechnical Engineer

Computer Engineer and Data Science

Social Scientist



Mini-Conference

- The NHERI GSC Mini-Conference is an **annual, fully virtual workshop** that aims to bring together graduate students in the field of natural hazards to **present ongoing research, network, and collaborate** with emerging within and across disciplines.
- Acceptable submissions may include posters and research papers. The mini-conference may also feature presentations such as professionalization events, networking, keynote speakers, and other workshops on natural hazards-related topics across all disciplines.

For some examples of presentations, check out last year's conference proceedings!



Breakout Rooms

Subcommittee Rooms

- Coastal Engineering
- Earthquake
- Geotechnical Engineering
- Reconnaissance
- Simulation and Computational Methods
- Social Sciences
- Tsunami
- Wind Engineering

If you are interested in multiple, feel free to join one or hop around a few!

Questions

- Before you speak, introduce yourself! (Name, University/Program, Applying/Planning to Apply to Serve as RSR?)
- What do you want to get out of the subcommittee?
- What are some topics you would want to feature at a subcommittee meeting?
- Who are some speakers you would want to see present at a subcommittee meeting?
- What research or other projects would you want to work on with other members of the subcommittee?
- How do you envision the role of the RSR supporting the subcommittee?



Meet the Executive Committee Nominees

Election will be held via Qualtrics email *October 27-29, 2023.*

Vice Chair Research	Vice Chair Workshops	Vice Chair DEI	Chair Tech & Comm	Vice Chair Membership
Morfu Olalekan Raimi	Amina Meselhe	Samira Tofazzol	Avripryio Chakaborty	Jenny Russell
Nurullah Bektas	Ben Labar	Vishal Mishra		

https://bit.ly/2023NHERIGSC_FallCandidates



Positions Open for Nominations

Nominations will close **Saturday, October 28, 2023.**

Vice Secretary

Vice Chair Tech &
Comm

https://bit.ly/2023NHERIGSC_FallCandidates



